

SME “Concert Black” Band Performance Attire



Ladies

Tops:

- Sleeves must be short sleeved or longer.
- No spaghetti straps or tank tops.
- Appropriate neckline

Tights:

- Black tights, if wearing a dress or skirt

Bottoms:

- Either skirt, dress or pants.
- SKIRT: Must go to the knee or lower. If you own the previous skirt, you are welcome to use that.
- DRESS: Same as skirt regulations.
- PANTS: Must be true dress slacks. No jeans or yoga pants will be allowed.

Examples



WITH





Continued





Continued



Continued



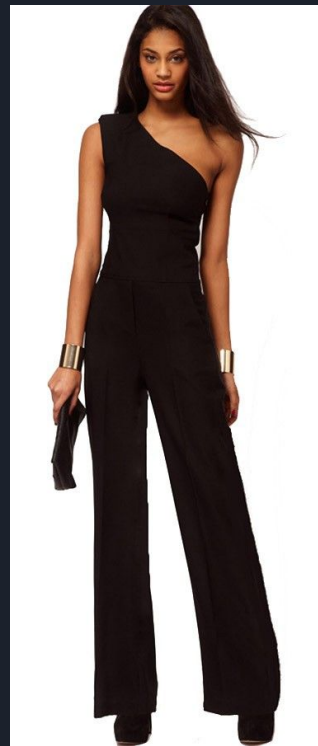


What **NOT** to wear

- Spaghetti straps
- Tank tops
- Bralettes
- Rompers
- Jumpsuits
- T-shirt dresses
- Yoga pants
- Jeans
- Athletic clothing
- Wedges
- Open toed shoes
 - Sandals
 - Flip Flops



You may think this is appropriate, but it's not





Gentlemen

Tops:

- Button Down Black Dress Shirt

Pants:

- Black Dress Slacks

Belt:

- Black Belt

Shoes:

- Black Dress Shoes

Examples



What **NOT** to wear





What **NOT** to wear

- Athletic Clothes
- Sweatpants
- Tennis Shoes
- Black t-shirt



WHAT **NOT**
TO **WEAR**